

Fall 2023

Vol. 2 No. 2



Montgomery Preservation, Inc.

NEWSLETTER

Our Mission

To preserve, protect, and promote Montgomery County's rich architectural heritage and historic landscapes.

Our Story

MPI is Montgomery County's county-wide nonprofit historic preservation organization. The group incorporated in 1984 to actively encourage and defend preservation efforts in local communities and throughout the county.

Today, MPI remains dedicated to saving our buildings, landscapes, and sites for future generations. MPI encourages preservation efforts in every corner of Montgomery County, working with all parties to ensure that our towns, owners of historic properties, businesses, and volunteer groups can step up to the modernization, revitalization, demographic, and development challenges of the 21st century.

Grace Church (1905) was designed by Baltimore architects Frank and Henry Davis, who also planned the 1891 Red Brick Courthouse.



MONTGOMERY PRESERVATION, INC. 2022 AWARDS FOR HISTORIC PRESERVATION



Six Montgomery County individuals and groups will be honored at MPI's 2022 Historic Preservation Awards ceremony this fall. Each recipient restored or rehabilitated a building or otherwise advanced local history and historic places. This 35th annual event will showcase outstanding achievements by extraordinary citizens from all corners of our county and celebrate preservation successes. Awards will be presented in person by County Councilmembers, State legislators, the County Executive, and other public officials. The public is cordially invited to attend.

OUTSTANDING ACHIEVEMENTS TO BE SHOWCASED AT THE CELEBRATION

Michael Dwyer award to Sandy Wright and David Therriault for preservation and adaptive reuse of the historic Franklin Veirs house in Poolesville as a bakery, café, and restaurant at Locals Farm Market.

Award to **James and Dale Sloan** for sensitive renovation and enlargement their early 20th-century bungalow in the Historic District of Takoma Park.

Award to **Zach Ransom and Boy Scout Troop 496** for an historically appropriate reconstruction of the outhouse behind the 1895 Boyds Negro school.

Award to architect **Miche Booz** for adaptive reuse of a 1920s one-car garage in Brookeville as a modern cottage.

The County Executive's Award to Historic Takoma's African-American Oral History Project for its efforts to preserve and share memories of life in the Black community through interviews and production of three videos.

The Montgomery Prize to the Montgomery Countryside Alliance for more than 20 years of educating the public and creating programs in the Agricultural Reserve that defend and maintain the Reserve as an agricultural area and preserve the historic rural landscapes of Montgomery County, Maryland.

To aid MPI in planning, attendees are requested to register at:
awards@montgomerypreservation.org

Sat., October 14, 2023

2-4:30p.m.

2-3pm Reception and
Tours of the Church

3-4pm Awards
Ceremony

4-4:30pm Reception

Grace United Methodist
Church

119 N Frederick Ave.,
Gaithersburg, MD

Contact Us

Montgomery Preservation, Inc
PO Box 4661

Rockville, MD 20849-4661
301-495-4915

Email

mpi@montgomerypreservation.org
website

www.montgomerypreservation.org

OFFICERS

Eileen McGuckian, President
(Rockville)

Vice President
vacant

Sandra Heiler, Treasurer
(Brookeville)

Judith Christensen, Secretary
(Gaithersburg)

DIRECTORS

Kate DeWitt, Kensington
Historical Society

Jean Findlay, Historic Medley
District

Carol Ireland, Capitol View Park
Historical Society

Diana Kohn, Historic Takoma

Jerry McCoy, Silver Spring
Historical Society

Nancy Pickard, Peerless
Rockville

Marcie Stickle, Silver Spring
Historical Soc. alternate

Susan Soderberg, Germantown
Historical Society

Karen Burditt, At Large

John Sery, At Large

STAFF

Station Rentals – John Sery

Awards – Sandra Heiler

Open Houses – Wendy Woodland

Newsletter – Susan Soderberg

Mary Reardon, Historic Preservation and Social Justice Advocate



Mary Reardon

Photo courtesy of Alan Bowser

MPI is sad to report the passing of Mary Reardon, on July 16. For 40 years, Mary dedicated her talents and passion to making Montgomery County, Silver Spring, and the world a better place. She advocated for the respect of history, excellence in architecture, sensible development, affordable housing, and fairness to all.

A number of downtown Silver Spring treasures still stand thanks to Mary Reardon: Canada Dry Building, Falkland Apartments, Montgomery Arms, and Hecht's Building. Most recently, she was working to preserve Weller's Dry Cleaning and the historic Jesup Blair mansion and park.

Mary Reardon was adventurous, thoughtful, intelligent, thorough, kind, and fun to be with. Mary was a founding member and Preservation Chair of Silver Spring Historical Society, and a strong Vice President of MPI. You can read a complete obituary here:

<https://www.rinaldifuneralservice.com/obituary/Mary-Reardon>.

On September 30, a celebration of Mary's life was held, followed by interment beside her sister at Rock Creek Cemetery and a reception at the Silver Spring Railroad Station. These events brought together friends, relations, colleagues, and admirers who were grateful for having known Mary Reardon for so many years.

COMSAT Building Update

Clarksburg is home to the unique and distinctive COMSAT building, located off Gateway Center Drive and highly visible to I-270. The building served as a research facility and headquarters for the Communications Satellite Corporation until sold in 1997. The design of this building was the creation of renown architect Cesar Pelli, whose work also includes Pacific Design Center (Los Angeles), the US Embassy (Tokyo), the North Terminal of Ronald Reagan Washington National Airport (DC), and Petronas Towers (Kuala Lumpur). Completed in 1969, this now 54-year-old building was not included in the 1994 Clarksburg Master Plan. In 2006, the County Council declined to declare it historic on grounds that this should be done as part of a master plan process. Now, in 2023, that time has arrived; the Clarksburg Gateway Sector Plan process is underway, and advocates hope the County Council will finally designate the COMSAT building on the Montgomery County Master Plan for Historic Preservation.



Photo from The COMSAT Legacy Project at <http://www.comsatlegacy.org>

**Historic Silver Spring
B&O Station**

**Free Open Houses
Join us the First Saturday of
the month, 10 am-2 pm**

**Model railroad demonstrations,
music, performances, exhibits,
workshops, children's crafts.
It's all happening here.
This is a drop-in program for
families Admission is free!**

8100 Georgia Avenue, Silver
Spring, MD 20910

For a list of happenings and
program dates go to:

www.montgomerypreservation.org
<https://www.facebook.com/MontgomeryPI>



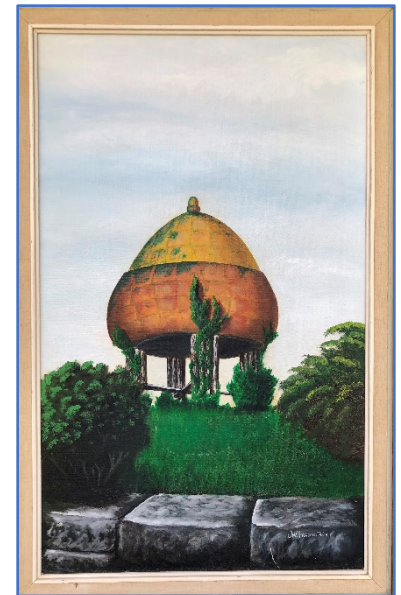
**HISTORIC PAINTING RETURNS
TO SILVER SPRING**

On December 18, 1967, this photograph appeared in *The Evening Star* of (far left) Sen. Daniel Brewster (D-MD) receiving a postcard reproduction of the depicted

Acorn Gazebo painting from Silver Spring Postmaster Wilburn Leizear and (far right) artist Joseph W. Grabenstein, a technical illustrator at Silver Spring's Johns Hopkins Applied Physics Laboratory. The painting/postcard depicts the circa 1850s Silver Spring landmark, still located in Acorn Urban Park, 8075 Newell Street.

This photograph was reproduced in the Silver Spring Historical Society's 2005 book, *Historic Silver Spring*, with the caption concluding, "The location of the original painting is unknown." Eighteen years later the painting has been found, having been donated to the SSHS by the artist's son, Joe. For decades the painting had resided in the artist's Melbourne, FL home until the house (but not the painting) was damaged by a

hurricane. The painting was then placed on loan with the local VFW Post where it resided until Mr. Grabenstein's passing. Plans are to publicly display the 21 1/2" x 35 1/2" oil-on-canvas painting in the near future.



TRAIN EXCURSION CELEBRATED 150TH ANNIVERSARY OF THE MET

On May 29, Memorial Day, more than 700 riders enjoyed a special experience. Of ages ranging from 3 months to 90 years, they dressed for the occasion in military uniforms, bright colors, railroad gear, and princess costumes. Families and individuals boarded a MARC train at Silver Spring, Kensington, Garrett Park, Rockville, Gaithersburg, or Germantown headed for Brunswick in Frederick County. Along the route the train was greeted by mayors, a high school band, local residents, even an organized community picnic. Each rider received a packet that included an Excursion Guide, a 150th anniversary button, a Brunswick map, and safety information.



Accompanied by a running MPI commentary on the history, architecture, and logistics of the Metropolitan Branch that opened in 1873, the excitement was unmistakable as the train moved north and west. Brunswick welcomed the travelers with smiles, maps, suggestions, and answers to questions about how to enjoy the town's sights, restaurants, museum, and hilly ambiance for two hours before the whistle blew to signal time for re-boarding.

The return trip was less boisterous but full of contented people. MARC engineers and volunteer conductors expressed pleasure at how smoothly the excursion went. After de-boarding at Montgomery County stations in reverse order, many of the riders remained to continue

conversations and take more photographs. And the stalwart group of excursion planners who had worked on this program for six months went home to a well-deserved good night's sleep.

Preservation Calendar

Saturdays October 7, November 4, and December 2 -- Open houses at Silver Spring B&O Railroad Station

October 31 – deadline to complete survey re future of historic Jesup Blair Mansion & Park
https://communityfeedback.opengov.com/portals/portal260/Issue_13275

November 4 – Montgomery County History Conference, in person at Montgomery College, Rockville campus.
www.montgomeryhistory.org

Get involved with local historic cemeteries:
Some options:
Fall Clean-up **November 12** at Morningstar Moses Cemetery, Cabin John
www.friendsofmoseshall.org

Wreaths Across America **December 16** at Monocacy Cemetery, Beallsville
www.monocacycemetery.com

Donations and Membership Dues are critical to MPI's programs and preservation efforts.

Annual Dues

Individual -- \$25	Family -- \$35
Organization -- \$50	Business -- \$75

Mail membership dues and/or donations to MPI with Name, address, telephone, email and date to:

Montgomery Preservation, Inc.
P.O. Box 4661
Rockville, MD 20849-4661

MPI encourages citizen participation in preservation activities. If you have a concern or would like to volunteer please contact us at:

mpi@montgomerypreservation.org

Montgomery Preservation, Inc.

P.O. Box 4661

Rockville, MD 20849-4661